

WisDOT Performance Measures

Katie Belmore & Tim Vik

Wisconsin Department of Transportation

October 2007

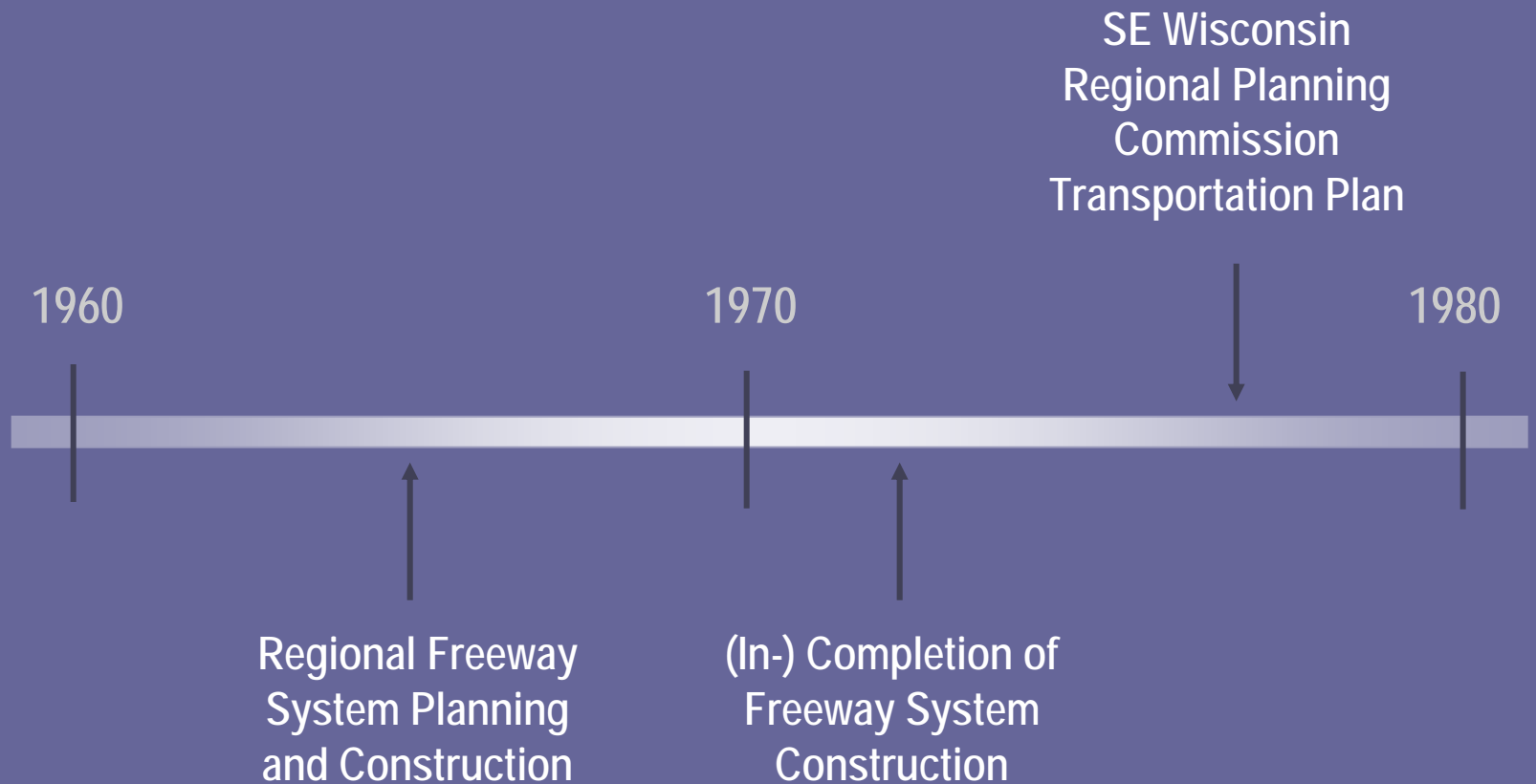


Presentation Overview

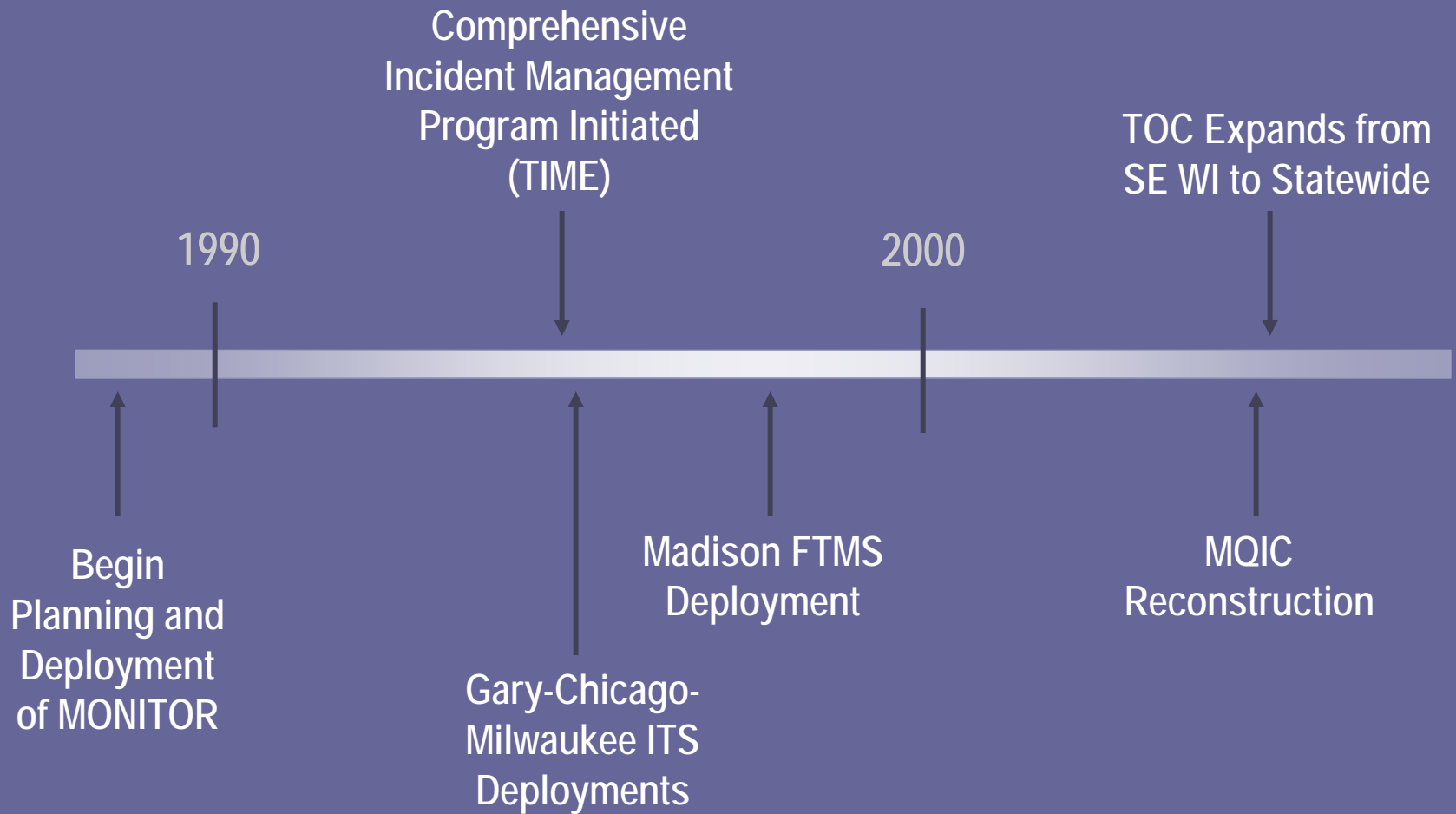
- WisDOT Statewide Traffic Operations Center
 - Background
 - Traffic Incident Management Enhancement (TIME)
- Performance Measures
 - History
 - Measures
 - Next Steps
 - Challenges
 - Why Measure



WisDOT Statewide Traffic Operations Center Background



WisDOT Statewide Traffic Operations Center Background



WisDOT Statewide Traffic Operations Center Background

The mission of the STOC is to manage congestion and improve transportation safety, mobility, and efficiency on Wisconsin's state highways

- Monitor, operate and maintain traffic management and traveler information systems on Wisconsin's highways
- 24 hr / 7 day a week / 365 days a year



WisDOT Statewide Traffic Operations Center TIME Program

Traffic Incident Management Enhancement (TIME) Program

- Award winning multi-agency, multi-discipline program dedicated to coordinating traffic incident management utilizing both relationships and technology



WisDOT Statewide Traffic Operations Center TIME Program - 2006/07 Action Plan

- Develop emergency traffic control and scene management guidance document
- Develop emergency alternate route guides and evacuation plans
- Complete public information campaign for Move Over Law
- Conduct regional multi-discipline trainings for transportation and public safety
- Conduct annual Statewide TIM Conference



Performance Measures History

- 2004 – Conducted brief national scan
- 2005 – Developed list of measures along with list of pros/cons for their application in WI
- 2005 – Developed first draft of the MONITOR Monthly Performance Report
- 2005 – Joined FHWA Focus States Initiative
- 2006 to Present – Updating, revising, improving performance measures



Performance Measures

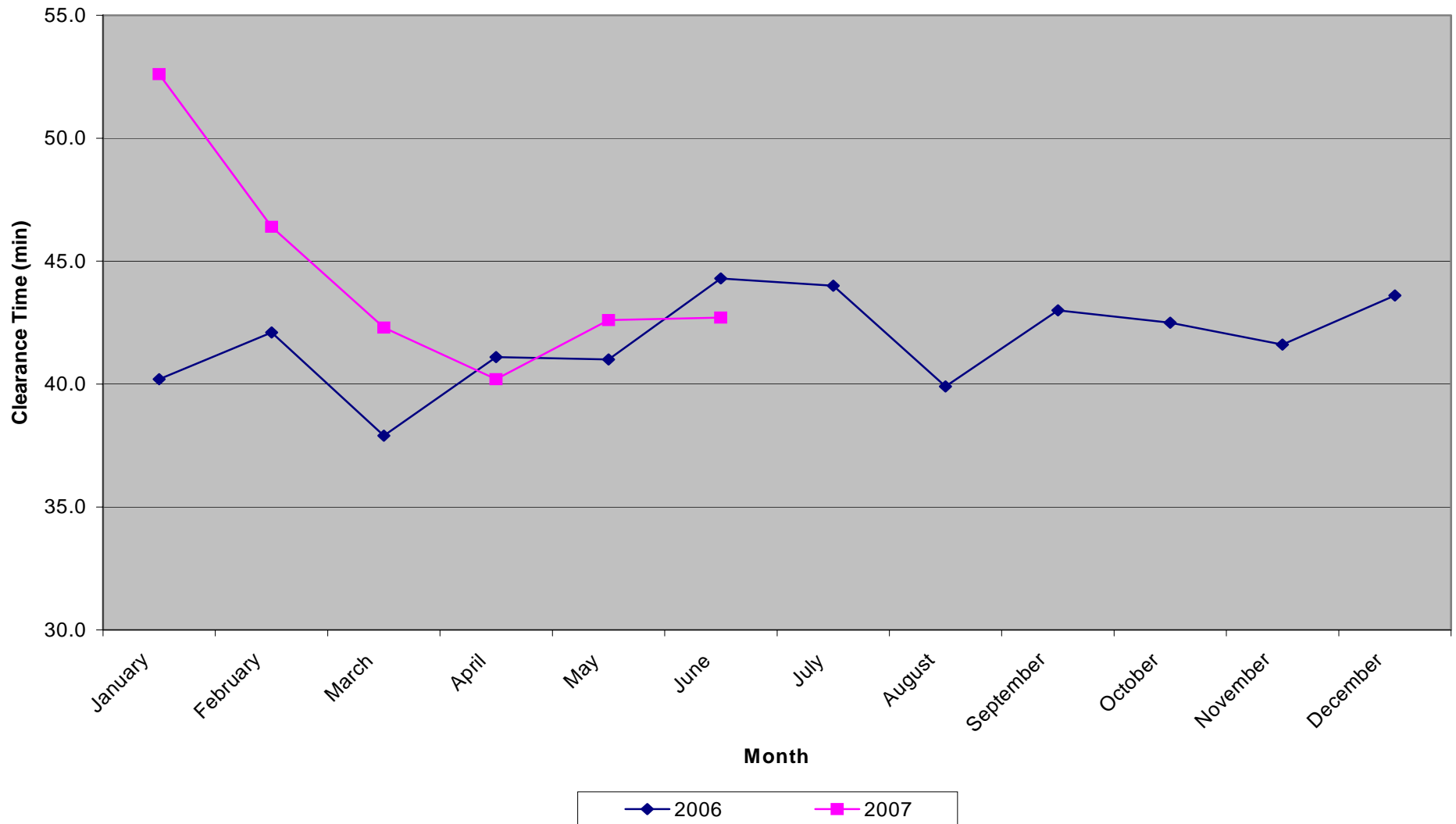
Monthly PM Report

- Total Incidents
- Response Time
- Incident Clearance Times
- Travel Rate Index
- Hours of Delay
- VMS Usage Report
- Maintenance Average Service Time
- Freeway Service & Safety Patrol Assists
- HOV Ramp Lane Usage



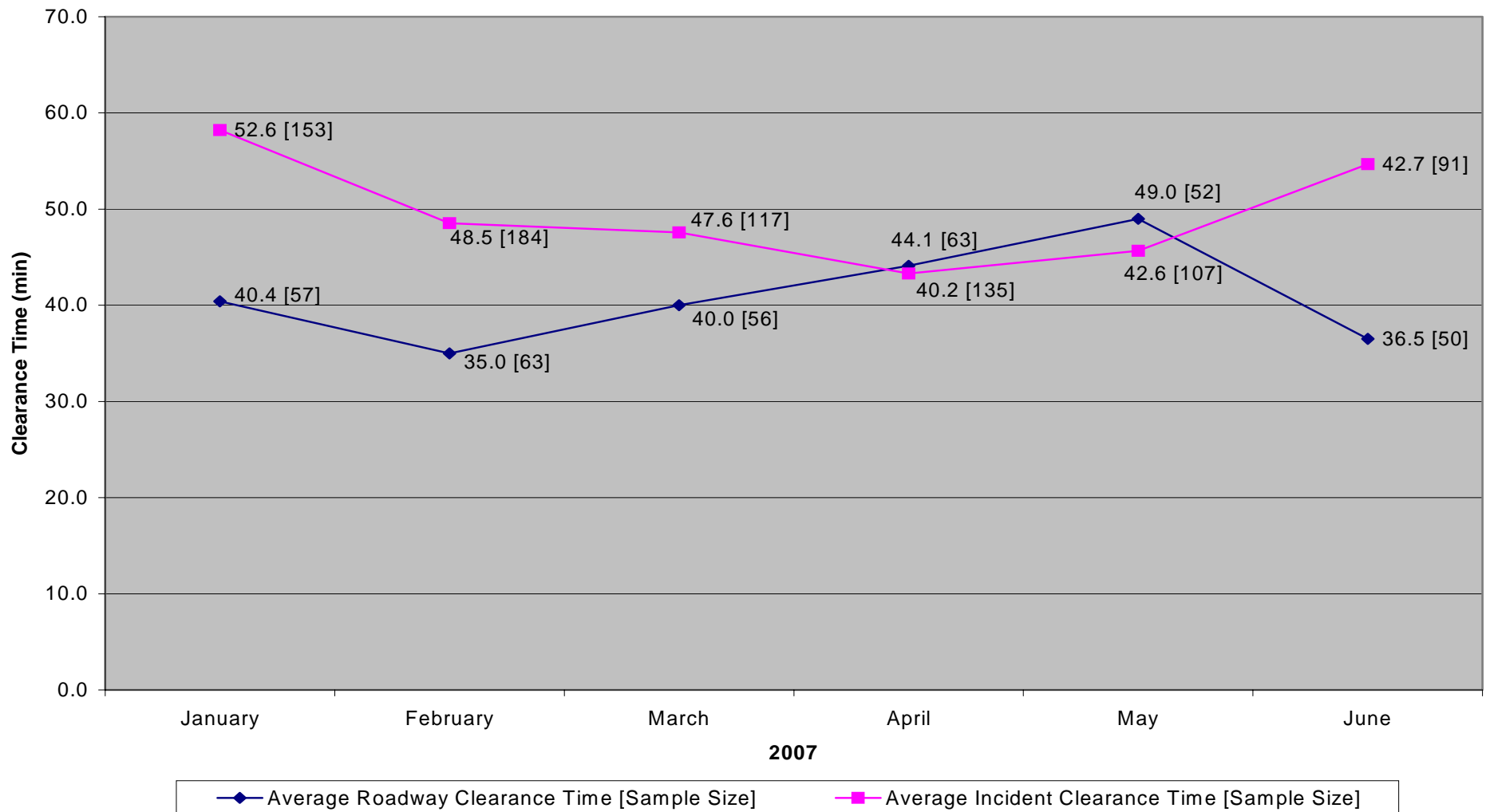
Performance Measures

Average Incident Clearance Time



Performance Measures

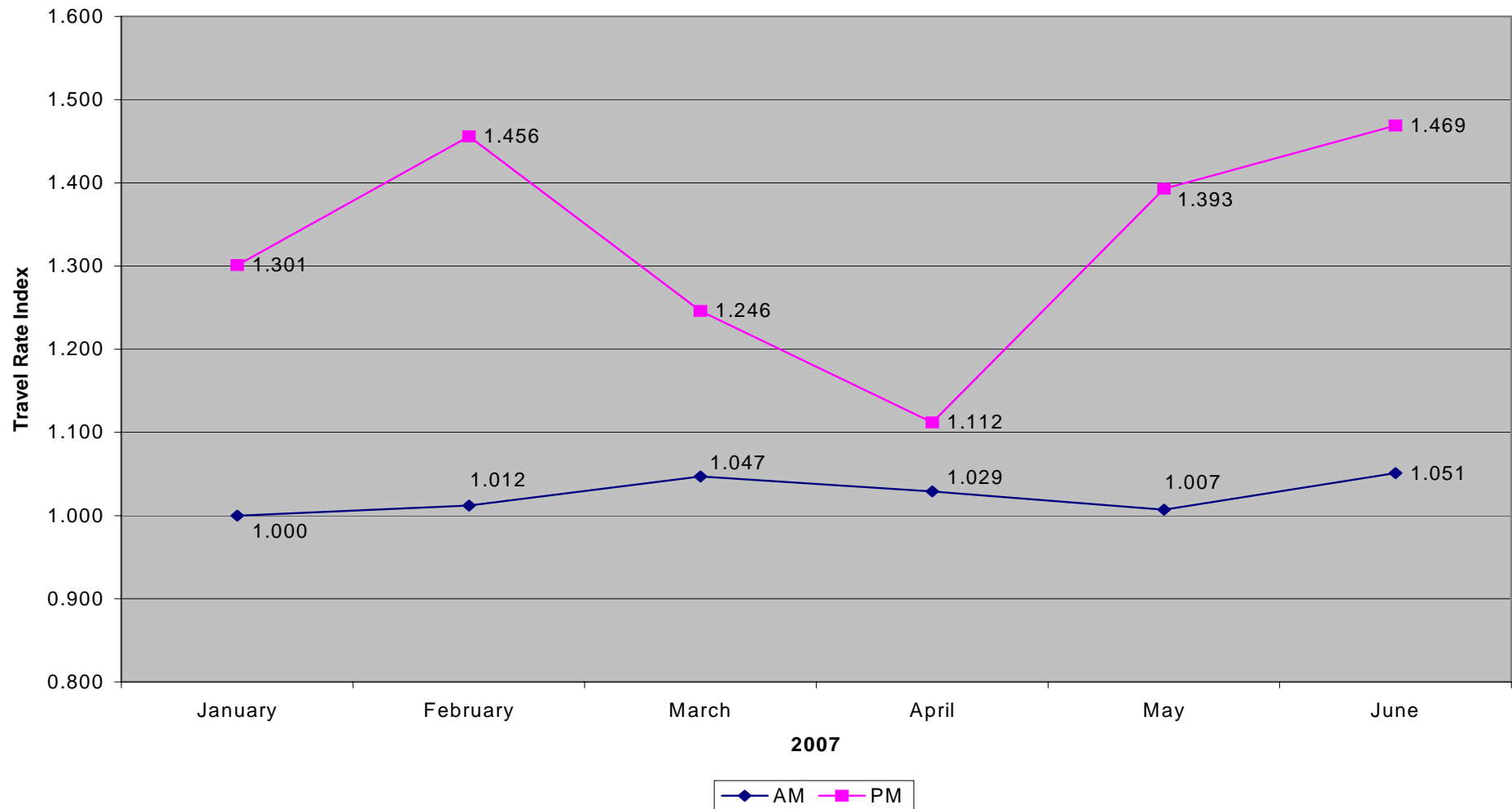
Clearance Times: Severity Types 2-5



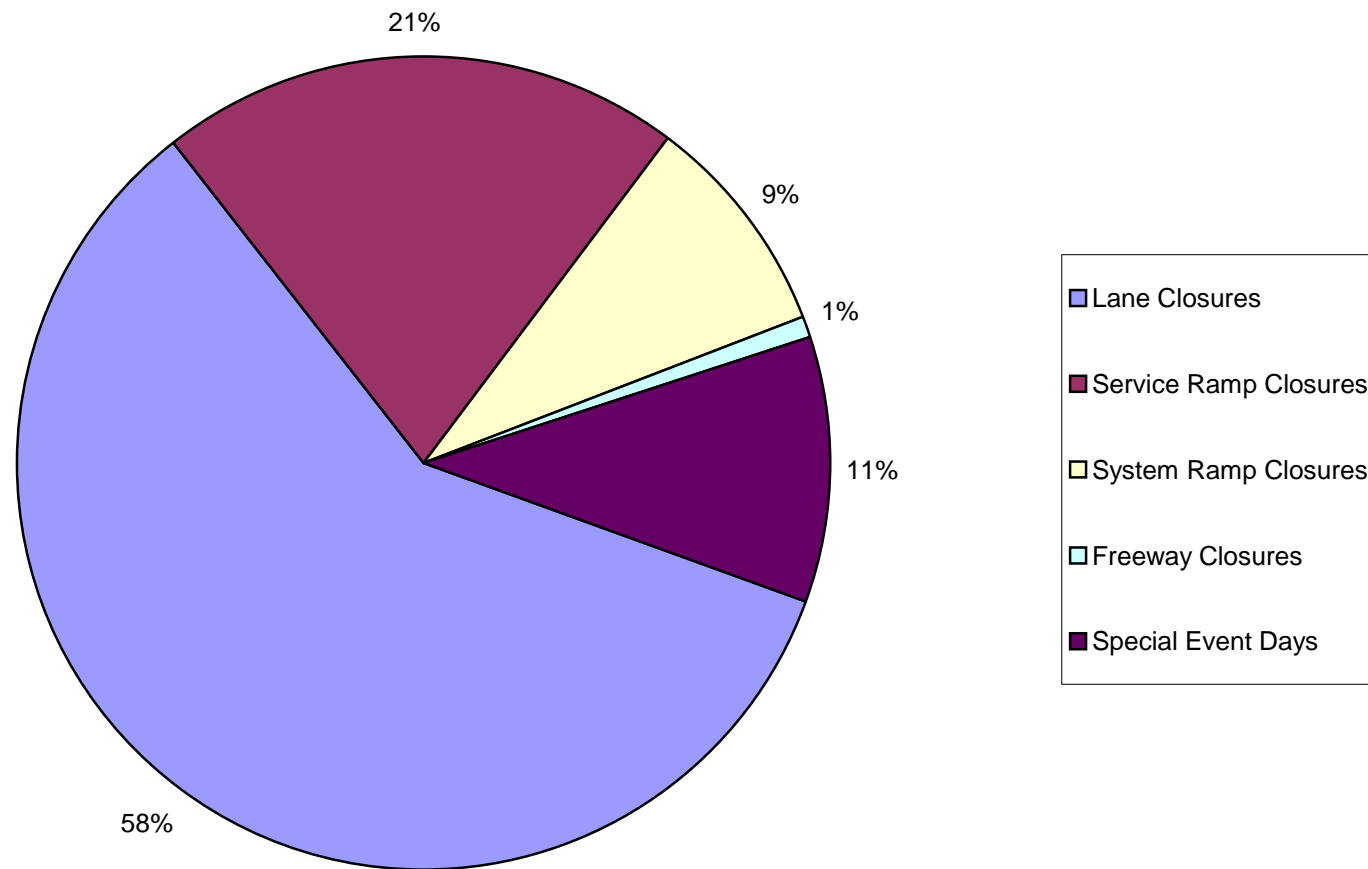
Performance Measures

Travel Rate Index

I-94 WB Marquette to Zoo



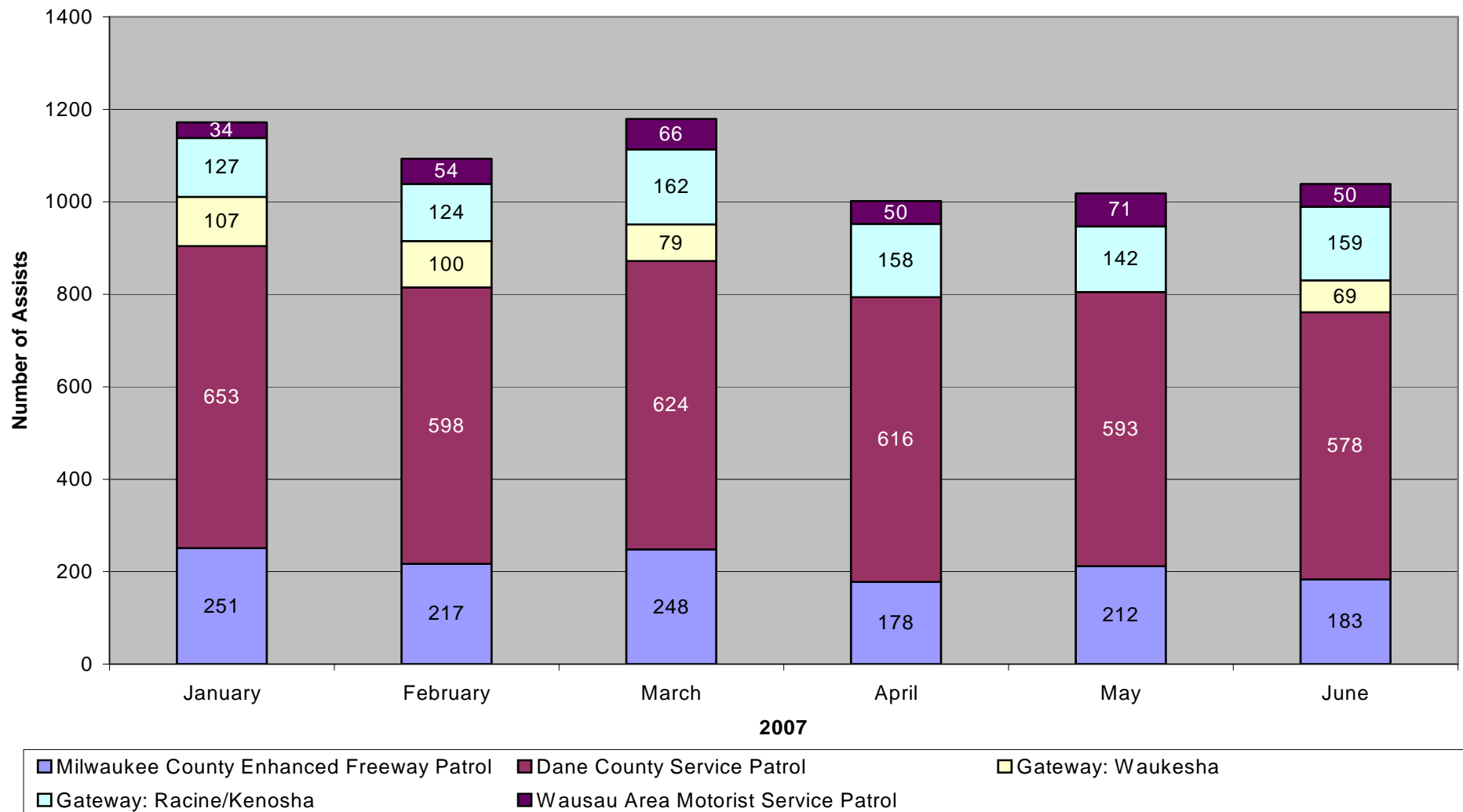
Performance Measures Planned Incidents



January - June 2007

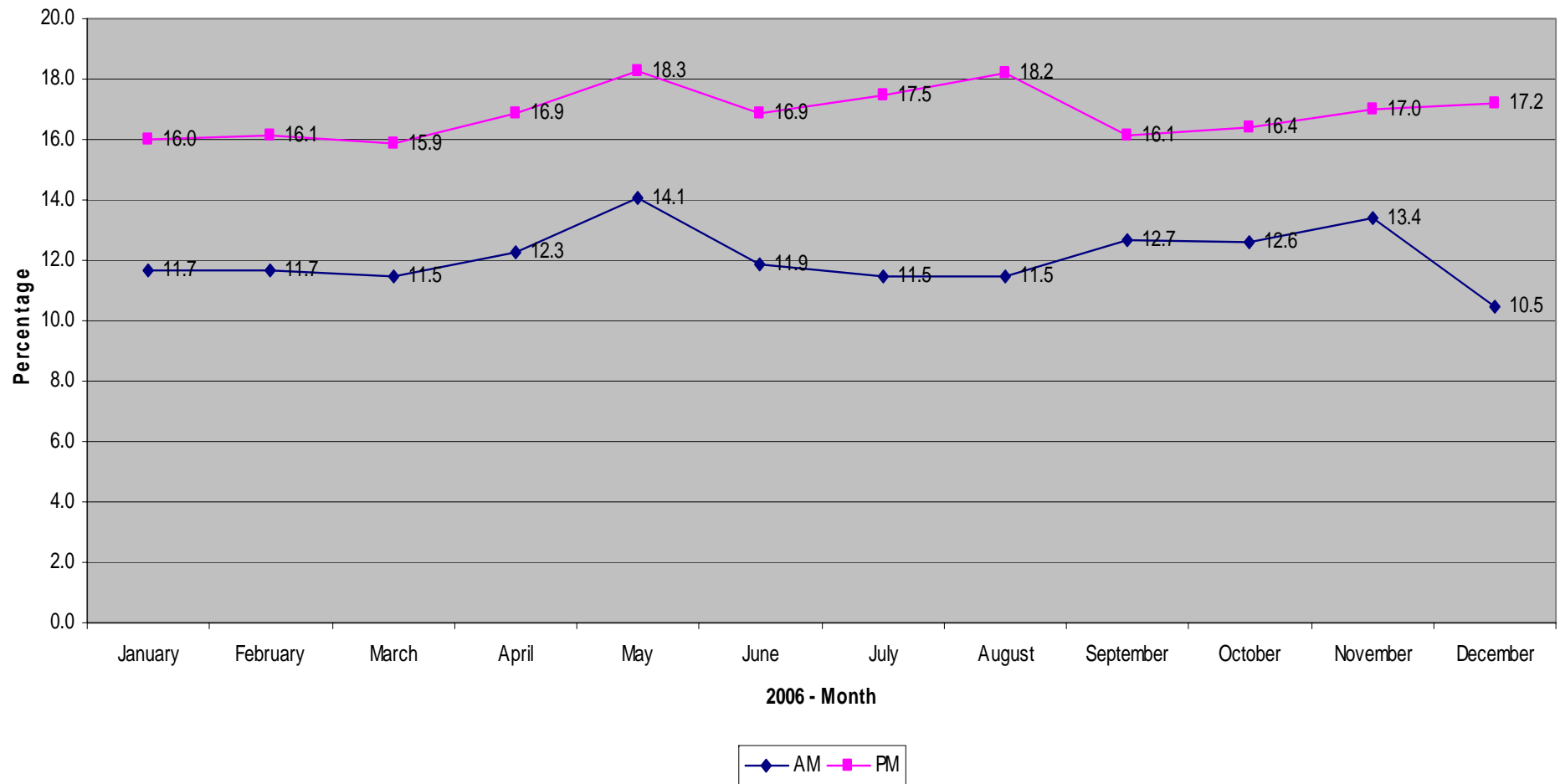
Performance Measures

Freeway Service & Safety Patrol Assists



Performance Measures

Average HOV Ramp Lane Usage



Performance Measures

Next Steps

- Divide corridors into more meaningful segments
- Expand monthly report to include data from Madison and Wausau
- InterCAD project with WI State Patrol, which will provide link to their Computer-Aided Dispatch (CAD) system
- Trend analysis



Performance Measures Challenges

- Data quality
- Constant technology changes/advances
- Initial lack of standard measures
- Making the results meaningful to multiple audiences



Performance Measures

Why Measure?

- Establish a baseline
- Method to monitor and improve day-to-day operations
- Tool for prioritizing needs
- Ultimately use to support/justify programs



Questions

Kelly Langer

System Operations and Electrical Engineering Section Manager

kelly.langer@dot.state.wi.us

Katie Belmore

Operations Engineer, HNTB Corporation

kbelmore@hntb.com

Tim Vik

Traffic Engineer, DAAR Engineering

timothy.vik@dot.state.wi.us

WisDOT Statewide Traffic Operations Center

433 W St. Paul Ave, Suite 300

Milwaukee, WI 53203

(414) 227-2166

